

From: [Endries, Mark](#)
To: [Reid, Rebekah N](#)
Subject: Fixed HENA Maxent Map
Date: Thursday, March 21, 2019 1:37:11 PM
Attachments: [maxentMap_Mar2019.png](#)
Importance: High

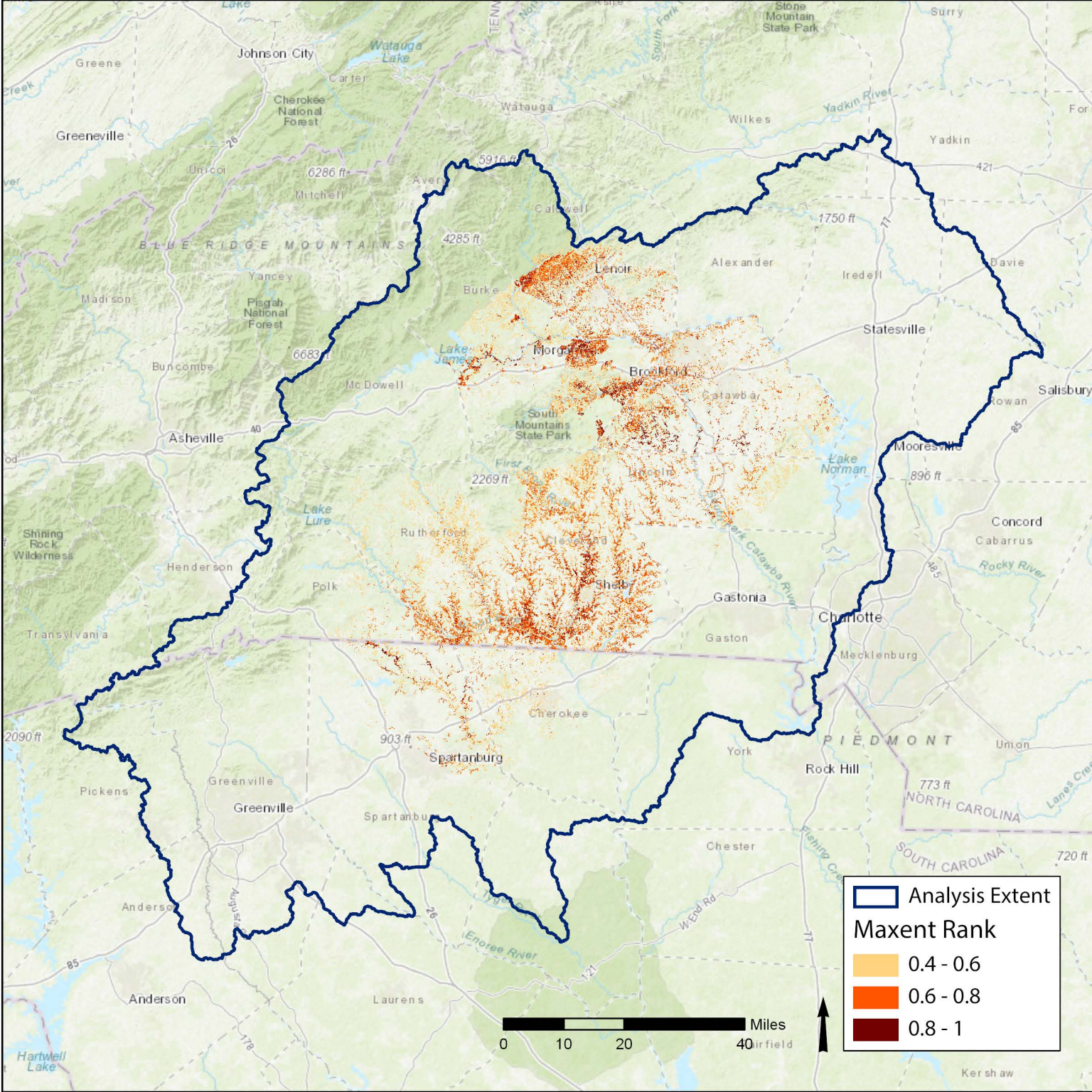
Hi Rebekah,

Attached is an updated HENA maxent map. The legend overall is much easier to interpret and correct! Sorry about that!

Mark

Mark Endries

USFWS
160 Zillicoa St
Asheville, NC 28801
Office: 828.258.3939 ext. 231
Mobile: 828.215.1740



From: [Reid, Rebekah N](#)
To: [Endries, Mark](#)
Subject: Re: Fixed HENA Maxent Map
Date: Thursday, March 21, 2019 1:41:27 PM

Thanks for catching that! I'll add it to the document.

Rebekah Reid

US Fish and Wildlife Service
Asheville Ecological Services Field Office
160 Zillicoa St.
Asheville, NC 28801
phone: 828-258-3939 x238
cell: 828-782-0090

NOTE: This email correspondence and any attachments to and from this sender is subject to the Freedom of Information Act (FOIA) and may be disclosed to third parties.

On Thu, Mar 21, 2019 at 1:37 PM Endries, Mark <mark_endries@fws.gov> wrote:

Hi Rebekah,

Attached is an updated HENA maxent map. The legend overall is much easier to interpret and correct! Sorry about that!

Mark

Mark Endries

USFWS
160 Zillicoa St
Asheville, NC 28801
Office: 828.258.3939 ext. 231
Mobile: 828.215.1740